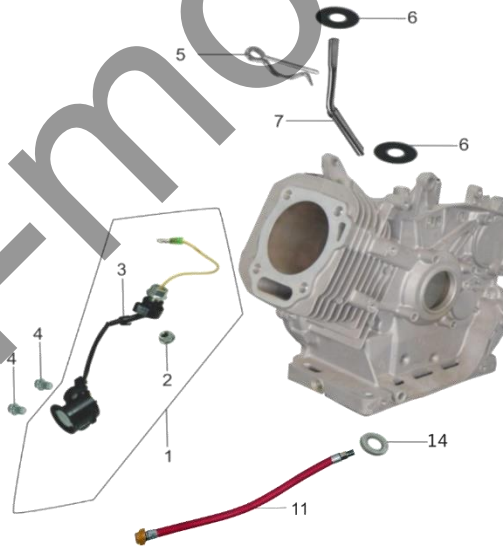


# LFQ-3690 产品图册



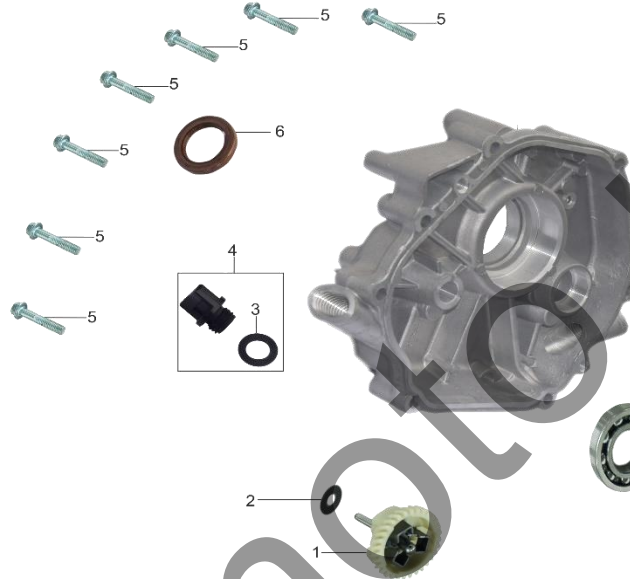
E-1 曲轴箱总成 CRANKCASE ASSY



Id	PartNo	PartName
E01-1	27400-A0810-0002	机油传感器组合
E01-2	T312-0001	螺母M10 GB/T6177.2
E01-3	11119-A1310-0001	O型密封圈Φ13×2.5
E01-4	T152-0004	螺栓M6×14 GB/T5789
E01-5	26112-A0810-0001	调速摆杆锁夹
E01-6	26113-A0810-0001	调速摆杆垫片
E01-7	26111-A0810-0001	调速摆杆
E01-8	11110-A0911-0001	曲轴箱组件
E01-9	T152-0019	螺栓M6×12 GB/T5789
E01-10	19316-A0810-0002	固线卡

E01-11	16635-BG140-0001	放油管组件
E01-12	11117-A0810-0001	曲轴箱橡胶圈
E01-13	11115-A0810-0001	放油螺塞
E01-14	11116-A0810-0001	放油螺塞垫圈 $\Phi 12 \times \Phi 20 \times 2$
E01-15	11120-A0810-0001	曲轴油封组件(一) $\Phi 30 \times \Phi 46 \times 8$
E01-16	27500-A0710-0001	单向导通器组合
E01-17	T152-0019	六角法兰面螺栓 $M6 \times 12$ GB/T5789

E-2曲轴箱盖组件 CRANKCASE COVER ASSY



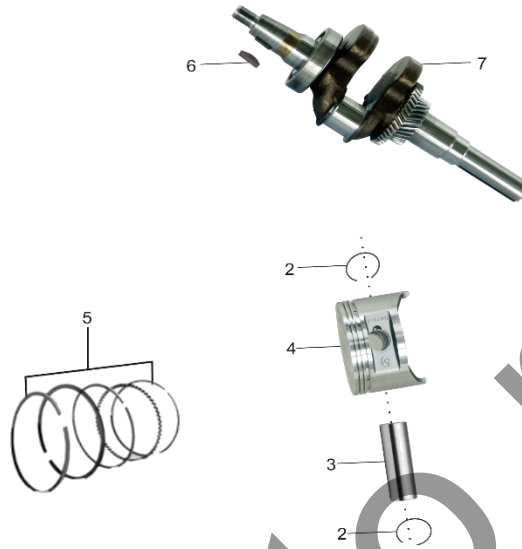
Id	PartNo	PartName
E02-1	25100-A0810-0001	调速从动齿轮组合
E02-2	26113-A0710-0001	调速摆杆垫片
E02-3	15512-A0810-0001	机油尺密封圈(一)
E02-4	15610-A0815-0001	机油塞组件
E02-5	T151-0008	螺栓 $M8 \times 35$ GB/T16674
E02-6	11120-A0810-0001	曲轴油封组件(一) $\Phi 30 \times \Phi 46 \times 8$
E02-7	11211-A0810-0001	曲轴箱盖
E02-8	15510-A0815-0001	机油尺组件
E02-9	11113-A0810-0001	曲轴箱盖定位销 $\Phi 8 \times 12$
E02-10	T910-0002	轴承6206GB/T276
E02-11	11114-A0810-0001	曲轴箱垫片

E-3 气缸头 气缸头盖总成  
CYLINDER HEAD & CYLINDER HEAD COVER ASS



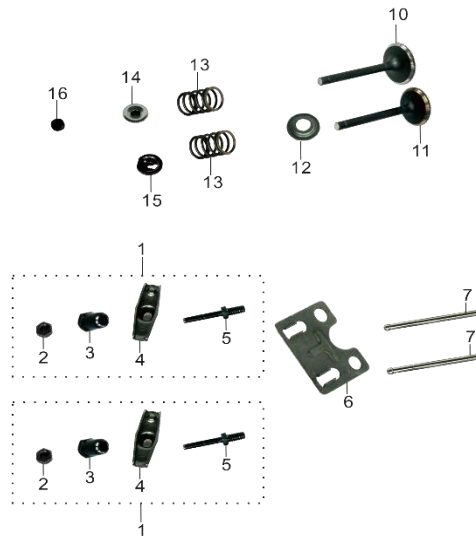
Id	PartNo	PartName
E03-1	12220-A0810-0001	气缸盖头盖螺栓组件M6×60
E03-2	12200-A0810-0002	气缸头盖组合
E03-3	12212-A0810-0001	气缸头盖密封圈
E03-4	12118-A0810-0002	气缸头螺栓 M10×80
E03-5	18214-A0810-0002	排气口双头螺栓M8×48.5
E03-6	27100-A0710-0001	火花塞组合
E03-7	12100-A0810-0001	气缸头组合
E03-8	12117-A0810-0001	气缸头定位销Φ12×20
E03-9	12120-A0910-0001	气缸头密封垫组件
E03-10	17218-A0810-0002	进气口双头螺栓公称直径:6mm*8mm;公称长度:127mm
E03-11	14420-A0810-0001	挡油罩组件
E03-12	19121-A0810-0001	下导风罩(一)
E03-13	T152-0019	六角法兰面螺栓M6×12 GB/T5789
E03-14	19316-A0810-0002	固线卡

E-4曲轴活塞连杆 平衡轴总成  
CRANKSHAFT, PISTON. CONNECTING&BALA



Id	PartNo	PartName
E04-1	13120-A0810-0001	连杆组件
E04-2	13313-A0710-0001	活塞销挡圈
E04-3	13312-A0810-0001	活塞销
E04-4	13311-A0910-0001	活塞
E04-5	13400-A0910-0001	活塞环组合
E04-6	13112-A0810-0001	半圆键
E04-7	13110-A0810-0001	曲轴组件

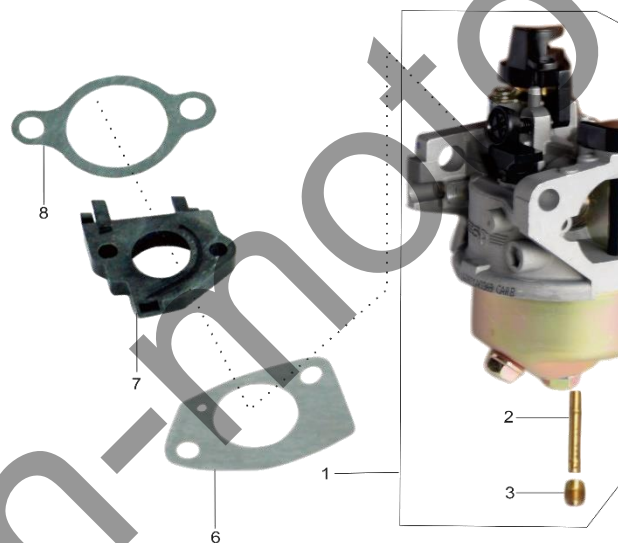
E-5 凸轮轴装配组合 气门摇臂组合  
COMBINATION OF CAM SHAFT & VALVE ROCK



Id	PartNo	PartName
E05-1	14310-A0810-0001	气门摇臂装配组合
E05-2	14314-A0710-0001	气门间隙调节螺母

E05-3	14312-A0710-0001	摇臂轴座销
E05-4	14311-A0810-0001	气门摇臂
E05-5	14313-A0710-0001	气门间隙调节螺栓
E05-6	14220-A0810-0002	推杆导架组件
E05-7	14210-A0810-0001	推杆组件
E05-8	14315-A0810-0001	挺柱
E05-9	14100-A0810-0001	凸轮轴装配组合
E05-10	14411-A0810-0001	进气门
E05-11	14412-A0810-0001	排气门
E05-12	14417-A0810-0001	气门弹簧下座
E05-13	14414-A0810-0001	气门弹簧
E05-14	14413-A0810-0001	气门弹簧座(一)
E05-15	14415-A0810-0001	气门弹簧座(二)
E05-16	14416-A0810-0001	气门顶帽

E-6 化油器总成 CARBURETOR ASSY



Id	PartNo	PartName
E06-1	16100-A0910-0009	化油器总成
E06-2	16244-A0910-0001	主喷油管
E06-3	16243-A0910-0001	主喷油孔
E06-4	17113-A0810-0003	空滤器垫片
E06-5	26252-EC510-0001	阻风门拉索固定架
E06-6	16113-A1010-0001	化油器垫片
E06-7	16120-A0810-0001	化油器接块组件
E06-8	17219-A0810-0001	进气口垫片

E-7 燃油箱总成 FUEL TANK ASSY



Id	PartNo	PartName
E07-1	T151-0006	螺栓M8×25 GB/T16674
E07-2	T354-0001	螺母M8 GB/T6177.1
E07-3	16400-A0410-0002	燃油箱盖组合
E07-4	16610-A0710-0004	过滤杯组件
E07-5	16510-A0812-0026	燃油箱组件
E07-6	12158-A1010-0001	隔热套
E07-7	16557-A0710-0001	出气接头
E07-8	16622-A0710-0002	油管夹(一)
E07-9	11513-A1010-0002	通气管
E07-10	16622-A0710-0003	油管夹(一)
E07-11	16630-A0710-0001	出油接头组件
E07-12	16621-A0810-0006	出油管(一)
E07-13	16922-A0810-0001	油管保护套
E07-14	16911-A0721-0001	油箱减震垫

E-8 空气滤清器总成 AIR CLEANER AS



Id	PartNo	PartName
E08-1	17100-A0812-0003	空滤器总成
E08-2	17111-A0712-0001	空滤器盖螺母
E08-3	17112-A0812-0001	空滤器盖
E08-4	17111-A0710-0001	蝶形螺母
E08-5	17124-A1010-0001	滤芯(一)
E08-6	17121-A0810-0001	空滤器垫圈
E08-7	17114-A0810-0001	空滤器本体
E08-8	17200-A0810-0002	进气管组合
E08-9	T152-0011	螺栓M6×28 GB/T5789
E08-10	19143-A0810-0001	废气管
E08-11	T314-0001	螺母M6 GB/T6187.1

### E-9 消声器组件 MUFFLER



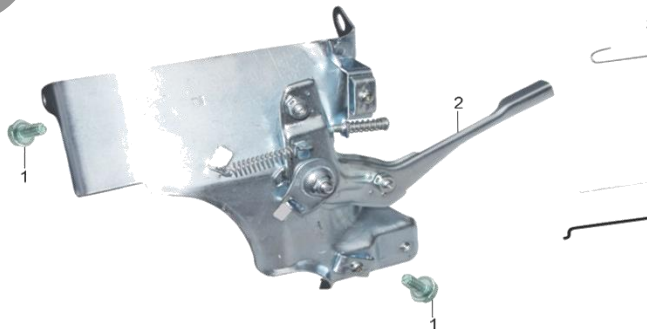
Id	PartNo	PartName
E09-1	18000-A0812-001	消声器总成
E09-2	T240-0004	自攻螺钉ST4.2×10 GB/T845
E09-3	18213-A0812-0001	导流罩
E09-4	18217-A0810-0001	消声器垫片
E09-5	T354-0001	自锁螺母M8 GB/T6186.1
E09-6	18117-A0810-0003	排气管
E09-7	18172-A0710-0001	补气阀垫片
E09-8	T314-0001	六角法兰面螺母M6 GB/T6177.1
E09-9	T152-0013	六角法兰面螺栓 M6x20mm GB/T5789
E09-10	18171-A0710-0001	补气阀
E09-11	18215-A0810-0001	排气口垫片

E-10 反冲起动部件 RECOIL STARTIER



Id	PartNo	PartName
E10-1	23100-A0812-0023	反冲起动器总成
E10-2	23200-A0810-0012	反冲起动器组合
E10-3	23230-A0712-0002	拉手组件
E10-4	T152-0036	螺栓M6×8 GB/T5789
E10-5	16628-A0810-0001	塑料管夹(二)
E10-6	T152-0019	螺栓M6×12 GB/T5789
E10-7	19211-A0810-0052	风扇罩
E10-8	19314-A0810-0001	护线套
E10-9	31255-B9130-0001	扎带

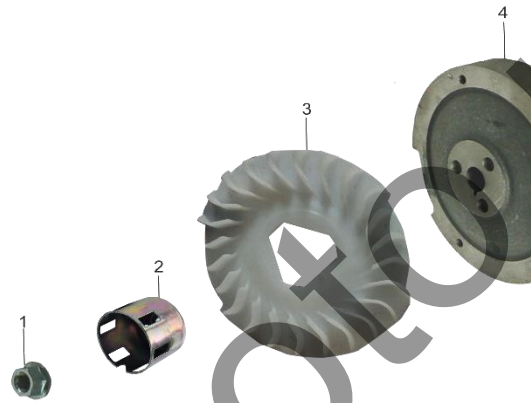
E-11 调速控制系统  
REGULATING CONTROL SYSTEM



Id	PartNo	PartName
----	--------	----------

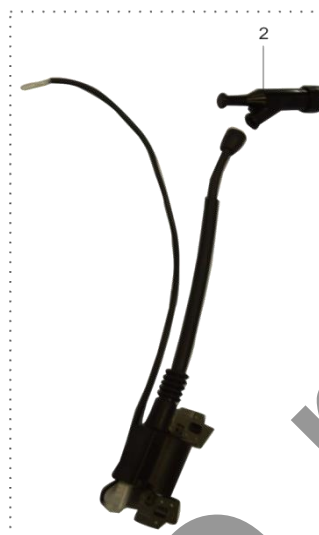
E11-1	T152-0019	螺栓M6×12 GB/T5789
E11-2	26200-A0810-0001	调速支架组合
E11-3	26117-A0810-0001	复位弹簧
E11-4	26118-A0810-0001	微调速弹簧
E11-5	26115-A0810-0001	调速拉杆
E11-6	T311-0002	螺母M6 GB/T6177.1
E11-7	26114-A0810-0001	调速臂
E11-8	26116-A0710-0001	调速臂紧固螺栓

E-12 飞轮部件 FLYWHEEL



Id	PartNo	PartName
E12-1	23317-A0810-0002	飞轮螺母
E12-2	23316-A0810-0001	起动套
E12-3	19111-A0810-0001	飞轮风扇
E12-4	23300-A0810-0001	飞轮组合

E-13 点火线圈组件 IGNITION COIL



Id	PartNo	PartName
E13-1	27200-A0810-0001	点火线圈组合(一)
E13-2	27220-A0710-0001	火花塞帽组件
E13-3	T152-0011	螺栓M6×30 GB/T5789

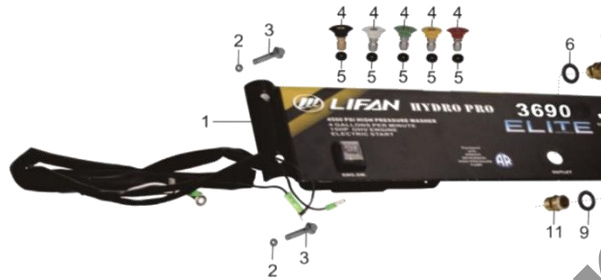
E-14 高压泵总成 WASHER PUMP ASSY



Id	PartNo	PartName
E14-1	T151-0067	六角法兰面螺栓M10×30×1.25 GB/T16674
E14-2	T441-0003	弹簧垫圈Φ10 GB/T93
E14-3	T411-0003	平垫圈Φ10 GB/T97.1
E14-4	55600-EC510-0001	清洗机高压泵总成
E14-5	55510-EC510-0001	清洗机出水管组件

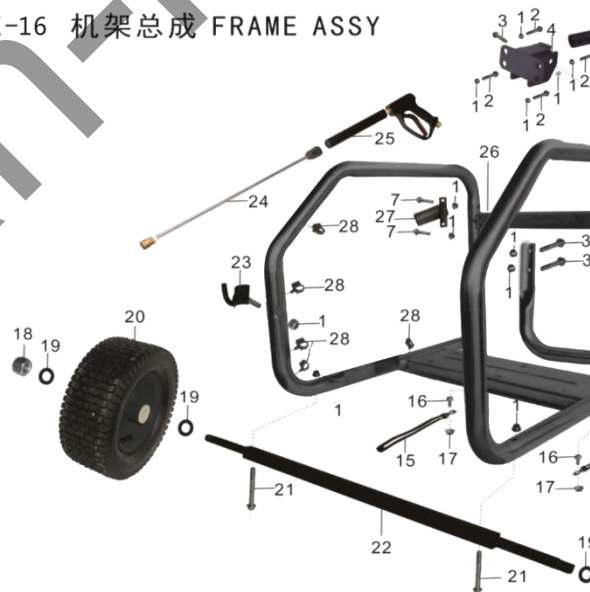
E14-6	55530-E8310-0003	清洗机进水管组件
E14-7	55533-EC510-0001	清洗机进水接头
E14-8	22117-A0810-0001	平键54×6.3×6

E-15 控制面板总成 CONTROL PANEL ASSY



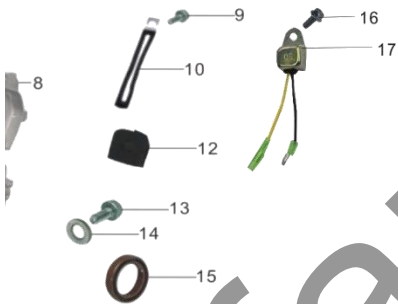
Id	PartNo	PartName
E15-1	31200-EC510-0010	控制面板总成
E15-2	T354-0001	自锁螺母M8 GB/T6186.1
E15-3	12118-A0430-0001	气缸头螺栓M8×45
E15-4	55126-ED910-0002	喷头
E15-5	55125-E7310-0001	喷头橡胶套
E15-6	16913-A0710-0001	垫圈Φ20×Φ35×1.5
E15-7	55431-EC510-0001	清洗机出水接头
E15-8	26250-EC510-0001	阻风门拉索组件
E15-9	23221-ED910-0001	平垫Φ22×Φ35×2.5
E15-10	55533-E8310-0001	清洗机进水接头
E15-11	55533-EC510-0001	清洗机进水接头

E-16 机架总成 FRAME ASSY



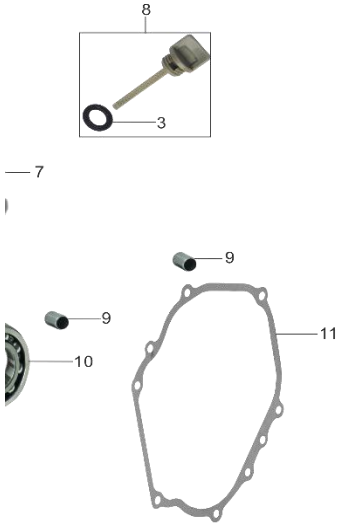
Id	PartNo	PartName
E16-1	T354-0001	自锁螺母M8 GB/T6186.1
E16-2	T151-0008	六角法兰面螺栓M8×35 GB/T16674

E16-3	12118-A1710-0001	气缸头螺栓M8×50
E16-4	55180-E8310-0001	扶手座组件
E16-5	55121-EC510-0001	清洗机机架扶手
E16-6	32480-BB140-0002	扶手插销组件
E16-7	12118-A0430-0001	气缸头螺栓M8×45
E16-8	55130-EC510-0001	水管挂件组件
E16-9	55540-E8310-0001	吸液导管组件
E16-10	55511-EC510-0001	高压水管
E16-11	55431-EC510-0002	清洗机出水接头
E16-12	55141-EC510-0001	清洗机衬脚支架
E16-13	31523-EEA10-0001	脚架支撑减震垫
E16-14	T415-0001	大垫圈
E16-15	19316-A0810-0002	固线卡
E16-16	T152-0004	六角法兰面螺栓M6×14 GB/T5789
E16-17	T314-0001	螺母M6 GB/T6187.1
E16-18	T313-0003	螺母M18 GB/T6182
E16-19	T412-0003	平垫Φ21 GB/T97.2
E16-20	45420-EC510-0001	车轮组件
E16-21	T151-0074	六角法兰面螺栓M8×70 GB/T16674
E16-22	55150-EC510-0001	清洗机轮轴组件
E16-23	55170-EC510-0001	支承弯钩组件
E16-24	55550-EC510-0001	喷枪组件
E16-25	55520-EC510-0001	喷管组件
E16-26	55100-EC510-0003	清洗机机架总成
E16-27	55160-EC510-0001	枪套挂架组件
E16-28	16842-BC130-0001	单向阀固定卡



Description	Quantity	Price
Oil sensor	1	
Nut M10	1	
O-ring $\Phi 13 \times 2.5$	1	
Bolt M6 $\times$ 14	2	
Split pin	1	
Washer	2	
Regulating sway bar	1	
Crankcase	1	
Bolt M6 $\times$ 12	1	
Fixture clamp	1	

Drain tube	1	
Seal	1	
Drain plug	1	
Washer $\Phi 12 \times \Phi 20 \times 2$	2	
Oil seal, crankshaft $\Phi 30 \times \Phi 46 \times 8$	1	
Diode	1	
bolt, M6 $\times 12$ GB/T5789	1	

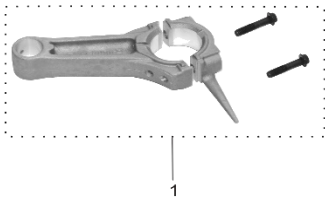


Description	Quantity	Price
Driven gear, regulator assy	1	
Washer	1	
Seal	2	
Oil plug with Seal	1	
Bolt M8 $\times 35$	7	
Oil seal, crankshaft $\Phi 30 \times \Phi 46 \times 8$	1	
Crankcase cover	1	
Dipstick with seal	1	
Set pin $\Phi 8 \times 12$	2	
Bearing 6206 GB/T276	1	
Gasket, crankcase	1	



Description	Quantity	Price
Bolt assy of cylinder cover M6*60	1	
Cylinder head cover Assy	1	
Gasket, cylinder head cover	1	
Bolt, cylinder head M10×80	4	
Stud of exhaust outlet M8*48.5	2	
Spark plug	1	
Cylinder head Assy	1	
Set pinΦ12×20	2	
Gasket, cylinder head	1	
Stud	2	
Seal	1	
Lead wind cover	1	
Bolt M6×12	2	
Clip	1	

ANCING SHAFT



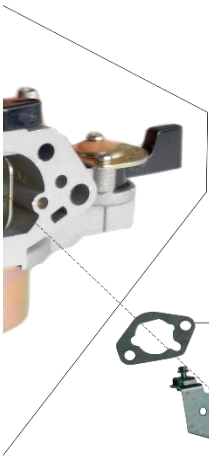
Description	Quantity	Price
Connect rod assy	1	
Piston pin circlip	2	
Piston pin	1	
Piston	1	
Piston ring set	1	
Woodruff key	1	
Crankshaft assy	1	

ER



Description	Quantity	Price
Valve rocker assy	2	
Lock nut	2	

Sleeve	2	
Valve rocker	2	
Adjusting bolt for valve gap	2	
Pusher guide	1	
Pusher	2	
Tappet	2	
Camshaft assy	1	
Intake valve	1	
Exhaust valve	1	
Spring retainer, exhaust valve	1	
Valve spring	2	
Spring seat, exhaust valve	1	
Spring seat, exhaust valve	1	
Cap of valve	1	



Description	Quantity	Price
Carburetor Assy	1	
Main nozzle	1	
Main jet	1	
Air cleaner gasket	2	
Support fixed, choke cable	1	
Carburetor gasket	1	
Connecting block	1	
Inlet gasket	1	

-3

-5

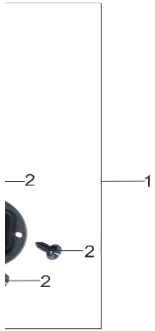


Description	Quantity	Price
Bolt M8×25 GB/T16674	2	
Nut M8 GB/T6177.1	2	
Fuel filler cap with packing ring	1	
Filter cup assy	1	
Fuel tank assy	1	
Insulation sleeve	1	
Air connector	1	
Pipe clamp (1)	3	
Air connect pipe	1	
Pipe clamp (1)	1	
Fuel connector assy	1	
Fuel outlet pipe (1)	1	
Protect cover of fuel pipe	1	
Cushion, fuel tank	2	

SSY



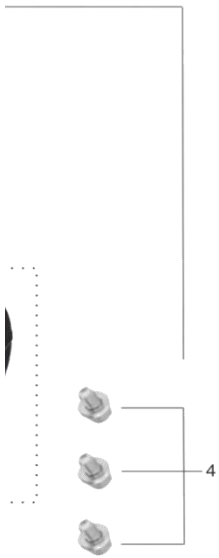
Description	Quantity	Price
Air cleaner assy	1	
Air cleaner cover nut	1	
Air cleaner cover	1	
Wing nut	1	
Filter element	1	
Washer	1	
Air cleaner aeration cover	1	
Air cleaner housing	1	
Bolt M6×28 GB/T5789	1	
Pipe of exhaust gas	1	
Nut M6 GB/T6187.1	2	



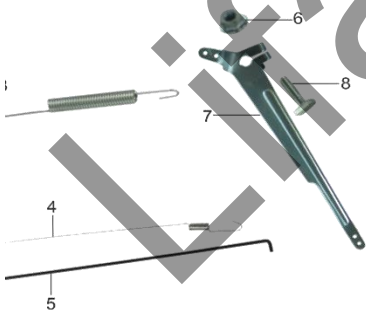
-10

Description	Quantity	Price
Muffler Comp	1	
Self-tapping bolt ST4.2×10 GB/T845	3	
Lead exhaust cover	1	
Muffler gasket	1	
Self-tapping nut M8 GB/T6186.1	5	
Exhaust pipe	1	
Gasket, gulp valve	1	
Nut M6	2	
Bolt M6x20	2	
Gulp valve	1	
Washer of exhaust outlet	1	

Lifanmoto.ru



Description	Quantity	Price
Recoil starter assy	1	
Recoil starter	1	
Pulling handle assy	1	
Bolt M6×8	3	
Plastic clamp (2)	1	
Bolt M6×12	5	
Fan hood assy	1	
Wire protect sleeve	1	
clip	2	



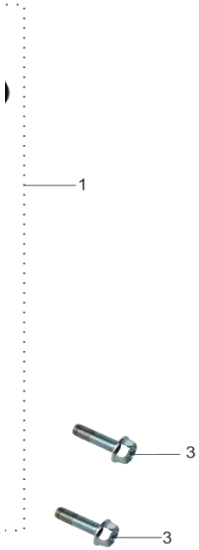
Description	Quantity	Price
-------------	----------	-------

Bolt M6×12 GB/T5789	2	
Regulating frame assy	1	
Back spring	1	
Fine regulating spring	1	
Pulling rod	1	
Nut M6	1	
Regulating arm	1	
Lock bolt	1	

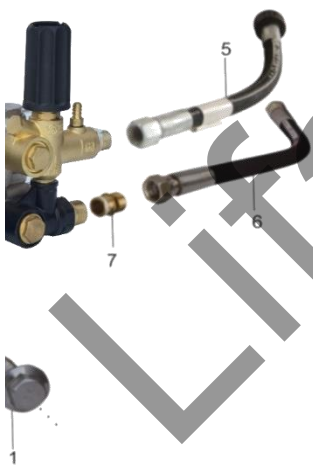


Description	Quantity	Price
Flywheel nut	1	
Nut M16×1.5	1	
Fan	1	
Flywheel assy	1	

Lifanmoto.ru

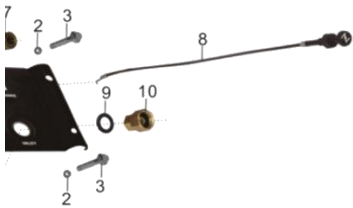


Description	Quantity	Price
Ignition coil assy	1	
Cap of spark plug assy	1	
Bolt, M6×30	2	

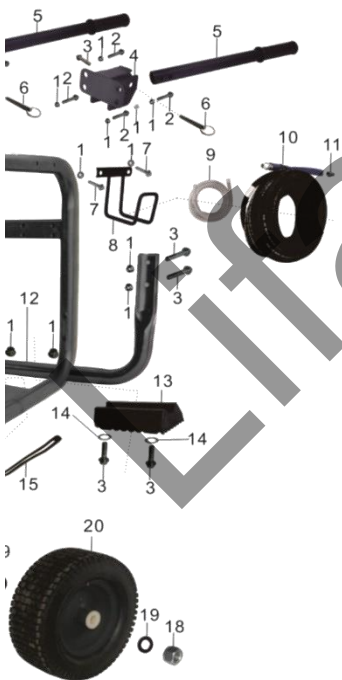


Description	Quantity	Price
Bolt M10×30×1.25	4	
Spring washer 10	4	
Washer 10	4	
Water pump assy	1	
Outlet pipe	1	

Inlet pipe	1	
Inlet connector	1	
Flat key 54×6.3×6	1	



Description	Quantity	Price
Control panel assy	1	
Nut M8	4	
Bolt M8×45	4	
Spray-head	5	
Seal	5	
Washer Φ20×Φ35×1.5	1	
Outlet connector	1	
Choke cable	1	
Washer Φ22×Φ35×2.5	2	
Inlet connector	1	
Inlet connector	1	



Description	Quantity	Price
Nut M8	23	
Bolt M8×35	8	

Bolt M8×50	8		
Base handrail	2		
Handrail assy	2		
Pin, handrail	2		
Bolt M8×45	4		
Hang, water pipe	1		
Inhale hose	1		
Water pipe	1		
Outlet connector	1		
Support, foot cushion	1		
Cushion, foot support	1		
Washer	2		
Clip	2		
Bolt M6×14	2		
Nut M6	2		
Nut M18	2		
Washer 21	4		
Wheel assy	2		
Bolt M8×70	2		
Axle	1		
Holder	1		
Spray gun assy	1		
Spray tube	1		
Frame	1		
Hang, spray gun	1		
Clip, plastic	5		

Lifan-moto.ru